
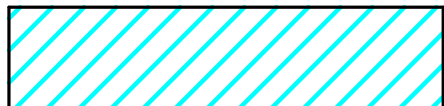

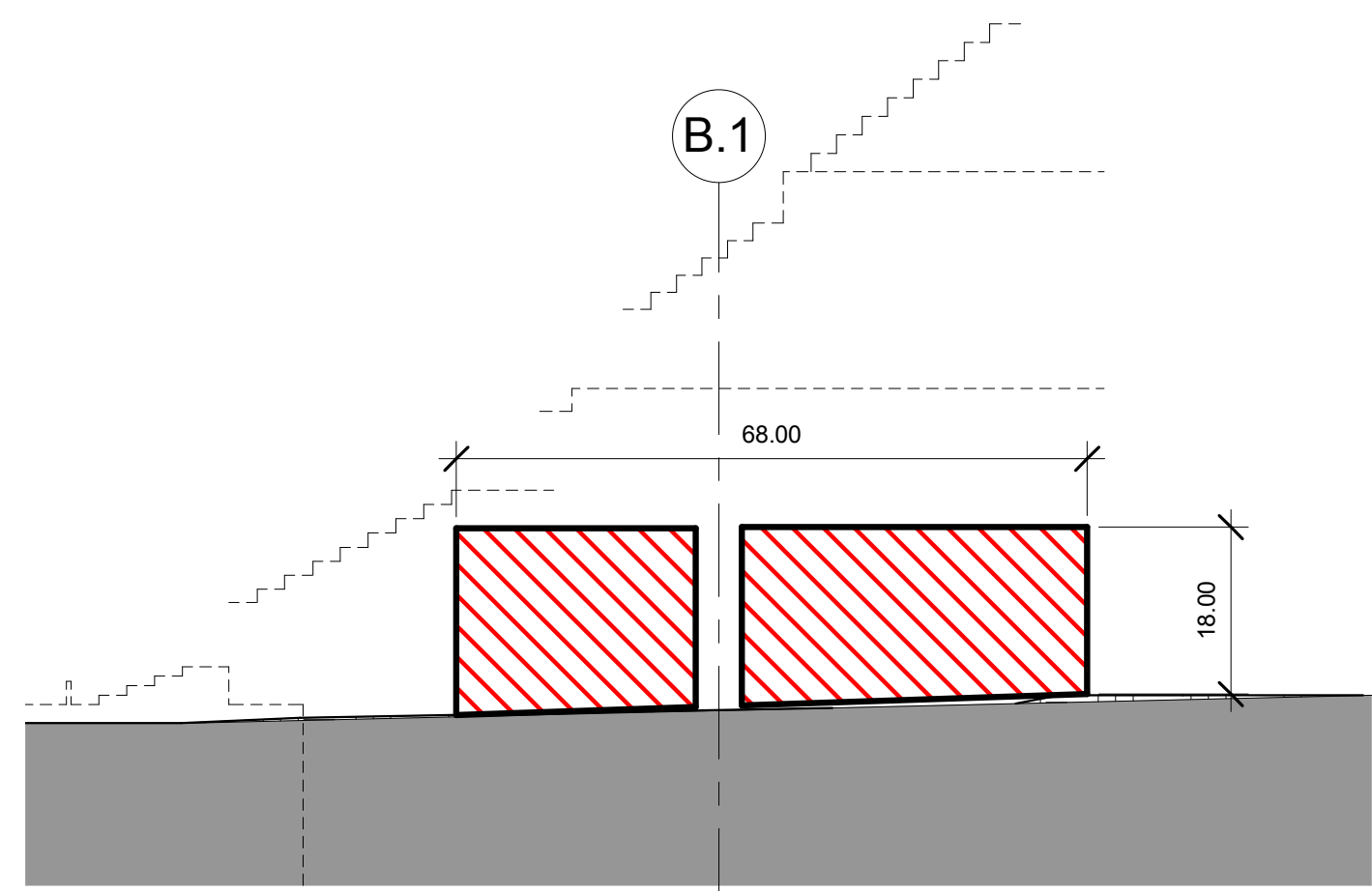


- PEPCO EASEMENT 1 
- PEPCO EASEMENT 2 
- VERIZON EASEMENT 1 

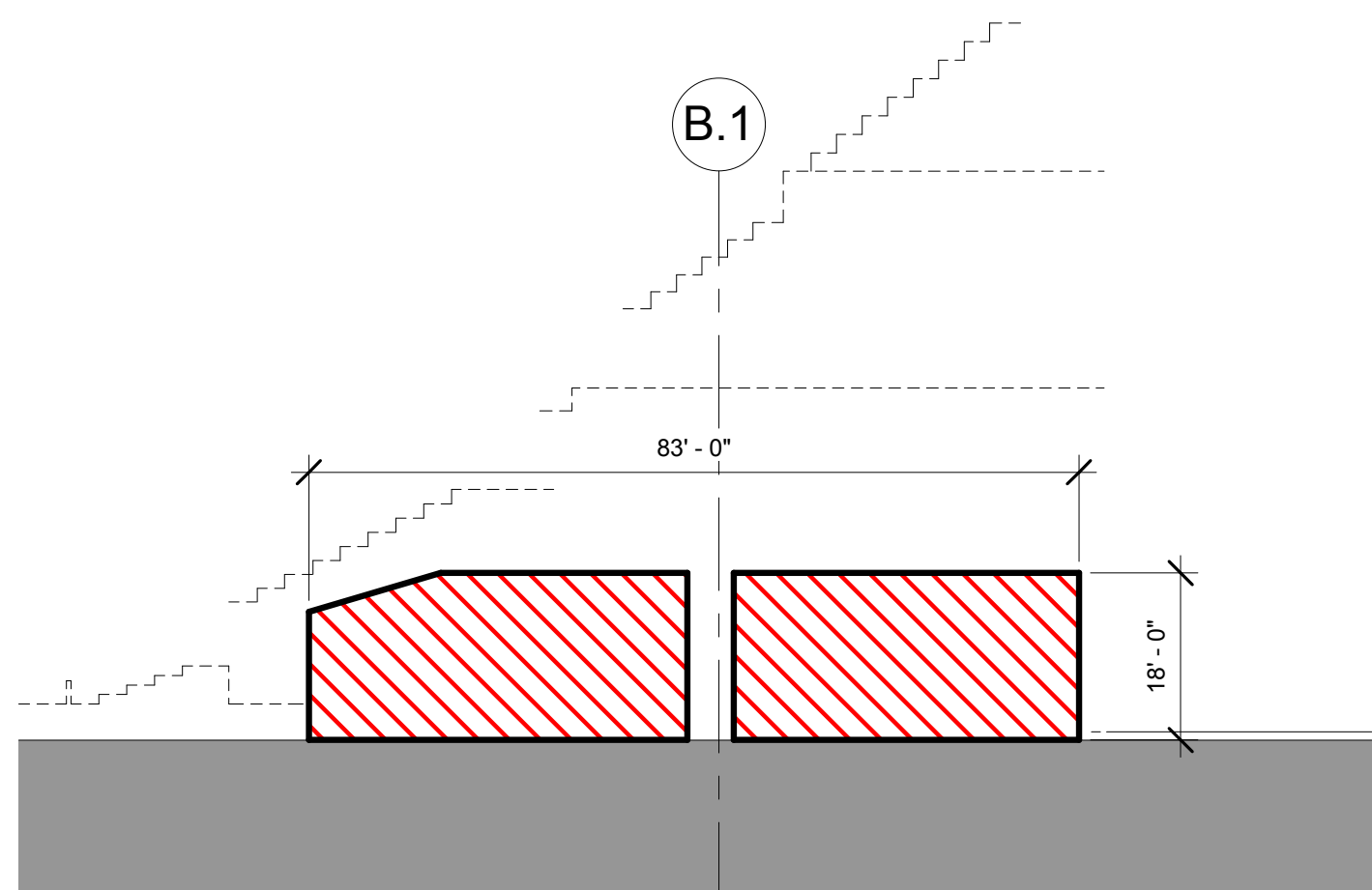
PART B - NOT PART OF STADIUM  
 PUD SUBMISSION, DESIGN INTENT  
 SHOWN FOR REFERENCE ONLY

PUBLIC REALM - NOT PART OF PUD  
 SUBMISSION, DESIGN INTENT SHOWN  
 FOR REFERENCE ONLY

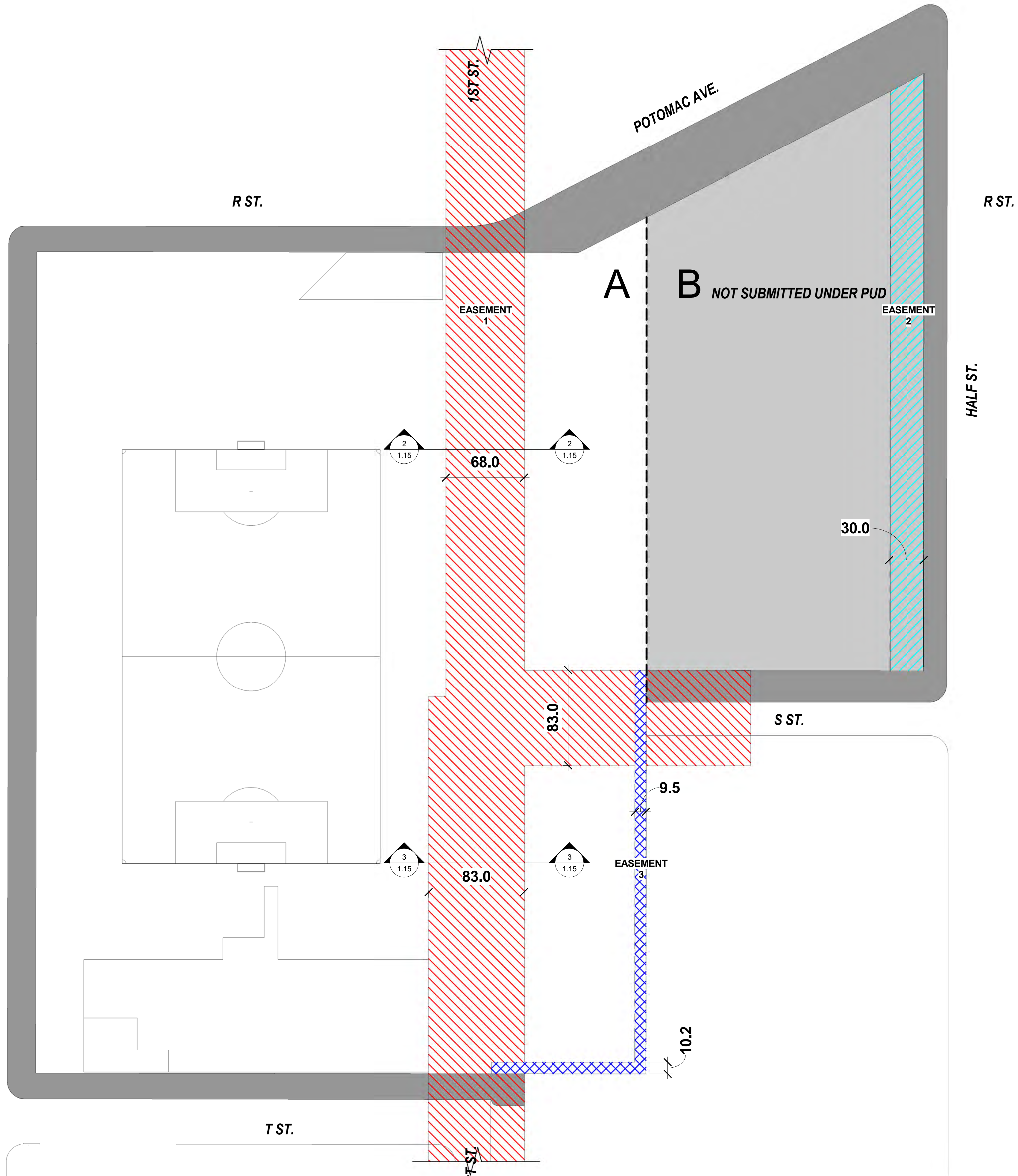
DISTRICT OF COLUMBIA RESPONSIBLE  
 FOR DESIGN OF PUBLIC REALM



② EASEMENT SECTION  
 1" = 20'-0"



③ EASEMENT SECTION  
 1" = 20'-0"



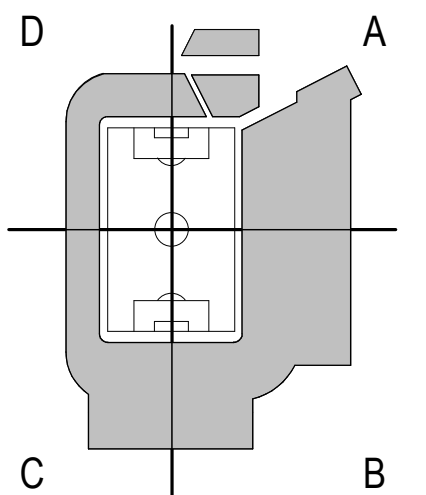
① PEPCO EASEMENT PLAN  
 1" = 50'-0"

**POPULOUS**  
 Marshall Moya Design



DC UNITED SOCCER STADIUM  
 100 Potomac Avenue, SW  
 Washington, DC 20024

100% PUD SUBMISSION



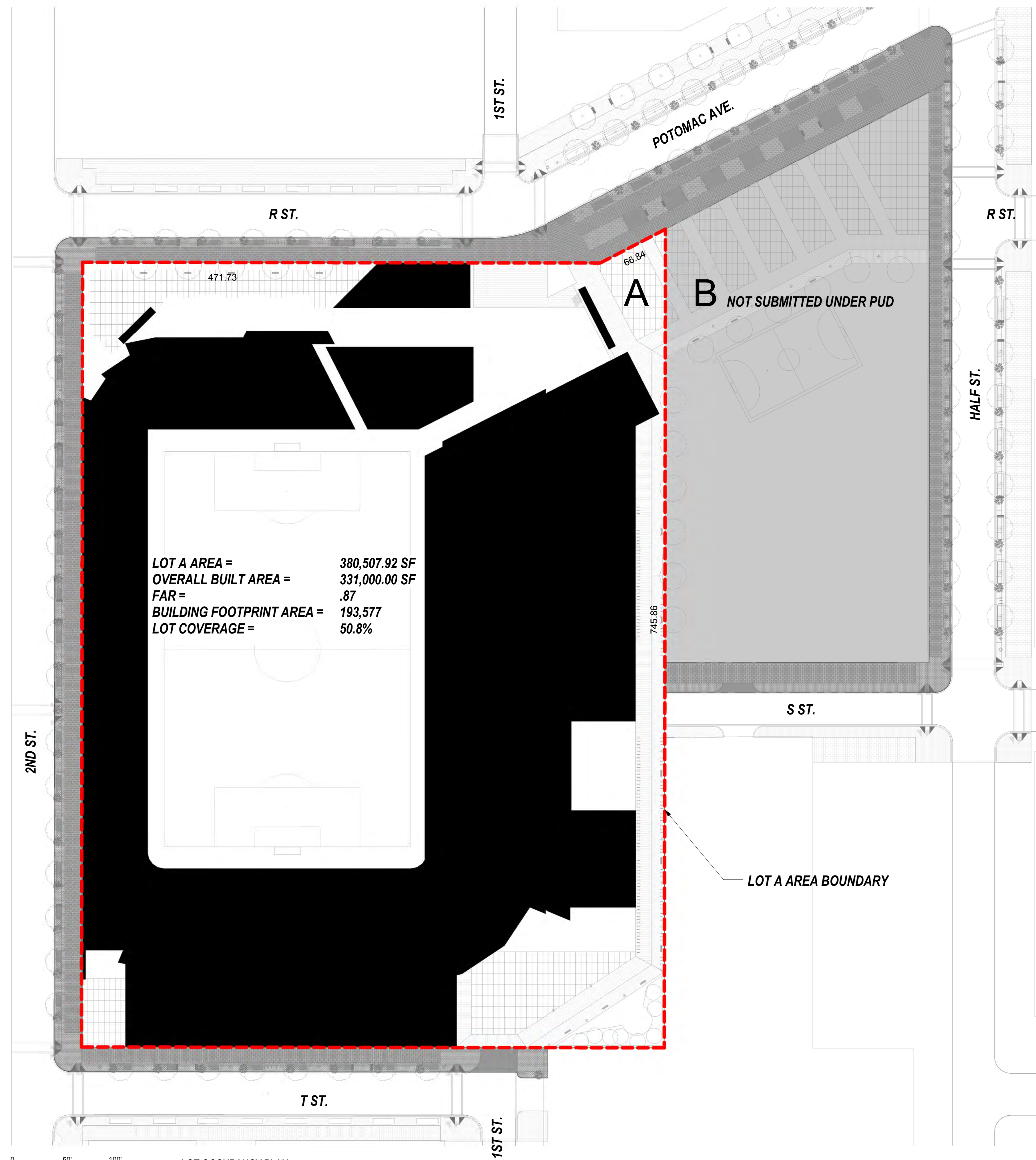
EASEMENT REF PLAN



**PART B - NOT PART OF STADIUM  
PUD SUBMISSION, DESIGN INTENT  
SHOWN FOR REFERENCE ONLY**

**PUBLIC REALM - NOT PART OF PUD  
SUBMISSION, DESIGN INTENT SHOWN  
FOR REFERENCE ONLY**

**DISTRICT OF COLUMBIA RESPONSIBLE  
FOR DESIGN OF PUBLIC REALM**



<b>LOT A AREA =</b>	<b>380,507.92 SF</b>
<b>OVERALL BUILT AREA =</b>	<b>331,000.00 SF</b>
<b>FAR =</b>	<b>.87</b>
<b>BUILDING FOOTPRINT AREA =</b>	<b>193,577</b>
<b>LOT COVERAGE =</b>	<b>50.8%</b>

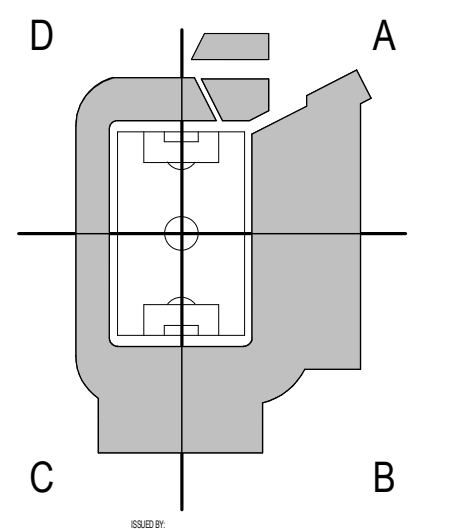
LOT A AREA BOUNDARY

**POPULOUS**  
Marshall | Moya Design

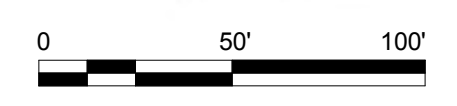


DC UNITED SOCCER STADIUM  
100 Potomac Avenue, SW  
Washington, DC 20024

100% PUD SUBMISSION



LOT OCCUPANCY PLAN



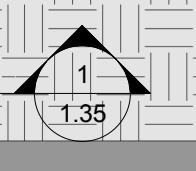
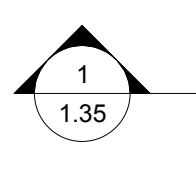
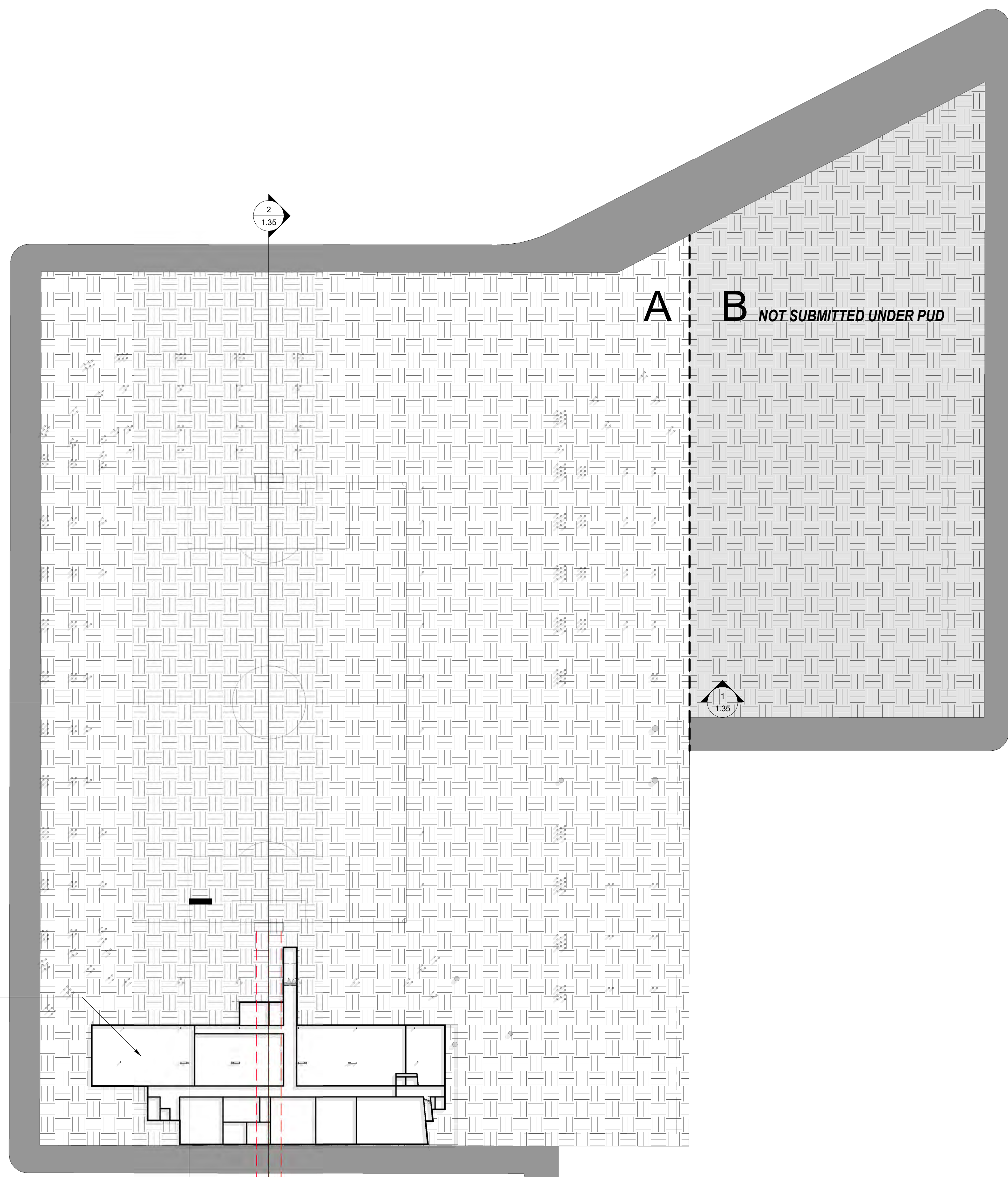
1 LOT OCCUPANCY PLAN  
1" = 50'-0"



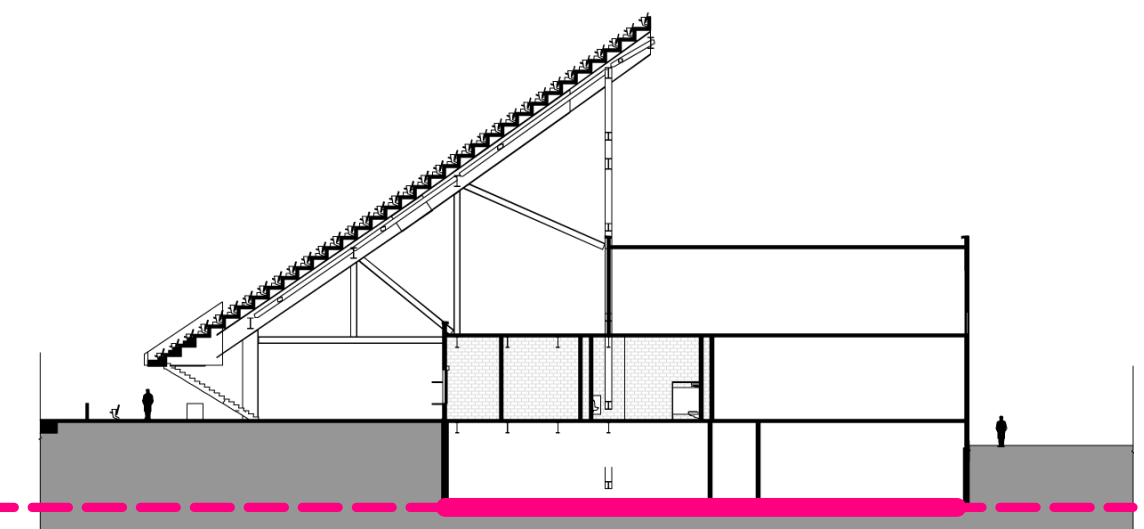
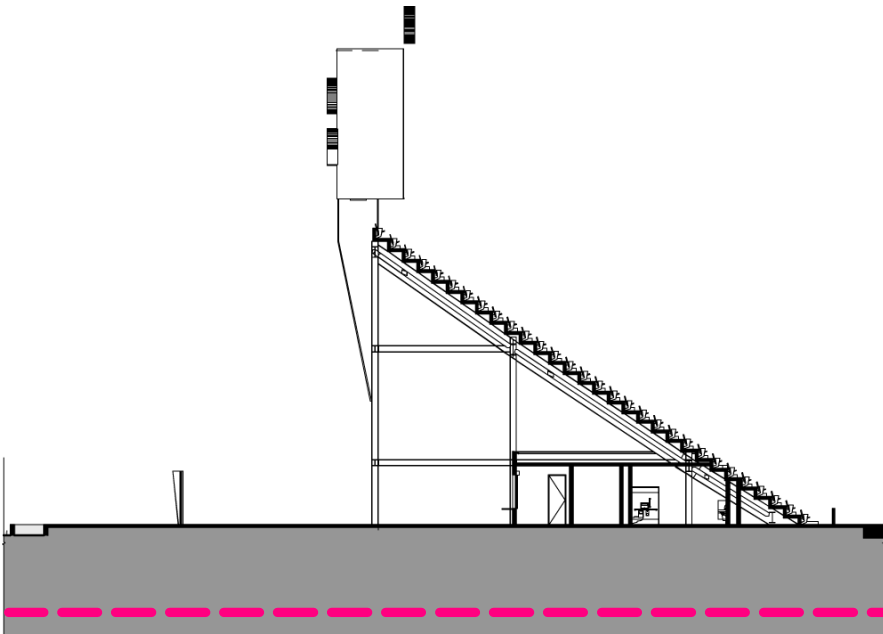
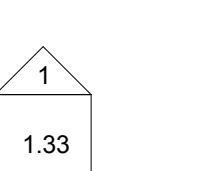
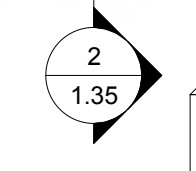
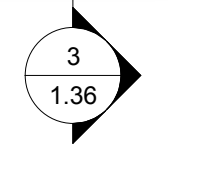
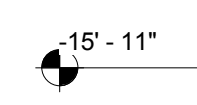
PART B - NOT PART OF STADIUM PUD SUBMISSION, DESIGN INTENT SHOWN FOR REFERENCE ONLY

PUBLIC REALM - NOT PART OF PUD SUBMISSION, DESIGN INTENT SHOWN FOR REFERENCE ONLY

DISTRICT OF COLUMBIA RESPONSIBLE FOR DESIGN OF PUBLIC REALM

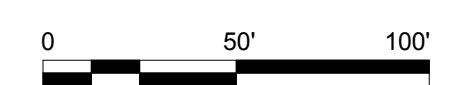


ELEVATIONS ARE RELATIVE TO FIELD LEVEL  
FIELD LEVEL @ +22'-0" ABOVE SEA LEVEL



NORTH SECTION

SOUTH SECTION



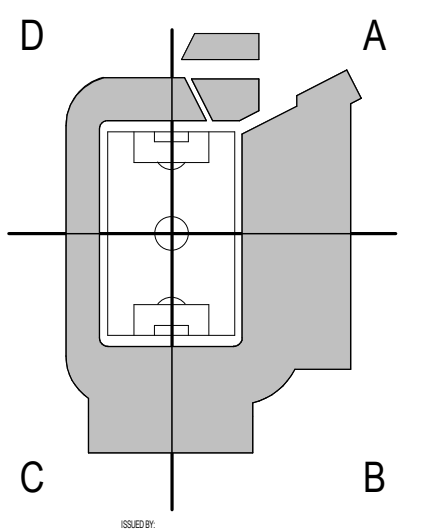
1 BASEMENT LEVEL REF PLAN  
1" = 50'-0"

POPULOUS  
Marshall Moya Design



DC UNITED SOCCER STADIUM  
100 Potomac Avenue, SW  
Washington, DC 20024

100% PUD SUBMISSION



REF PLAN - BASEMENT LEVEL PLAN



### ENTRY LEGEND

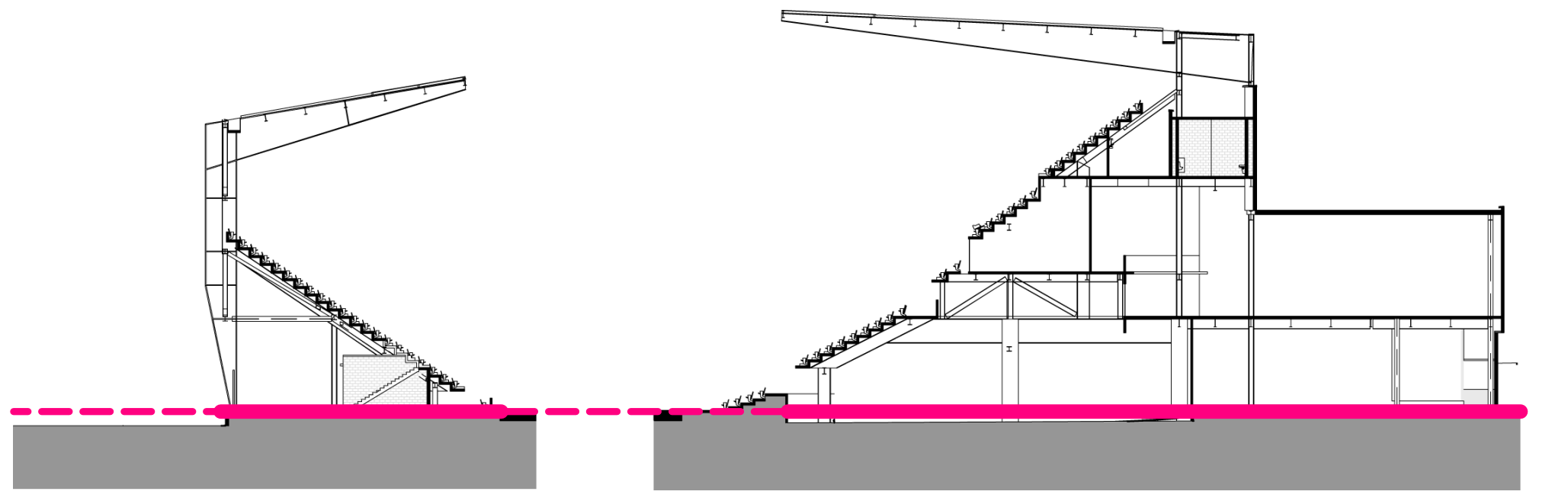
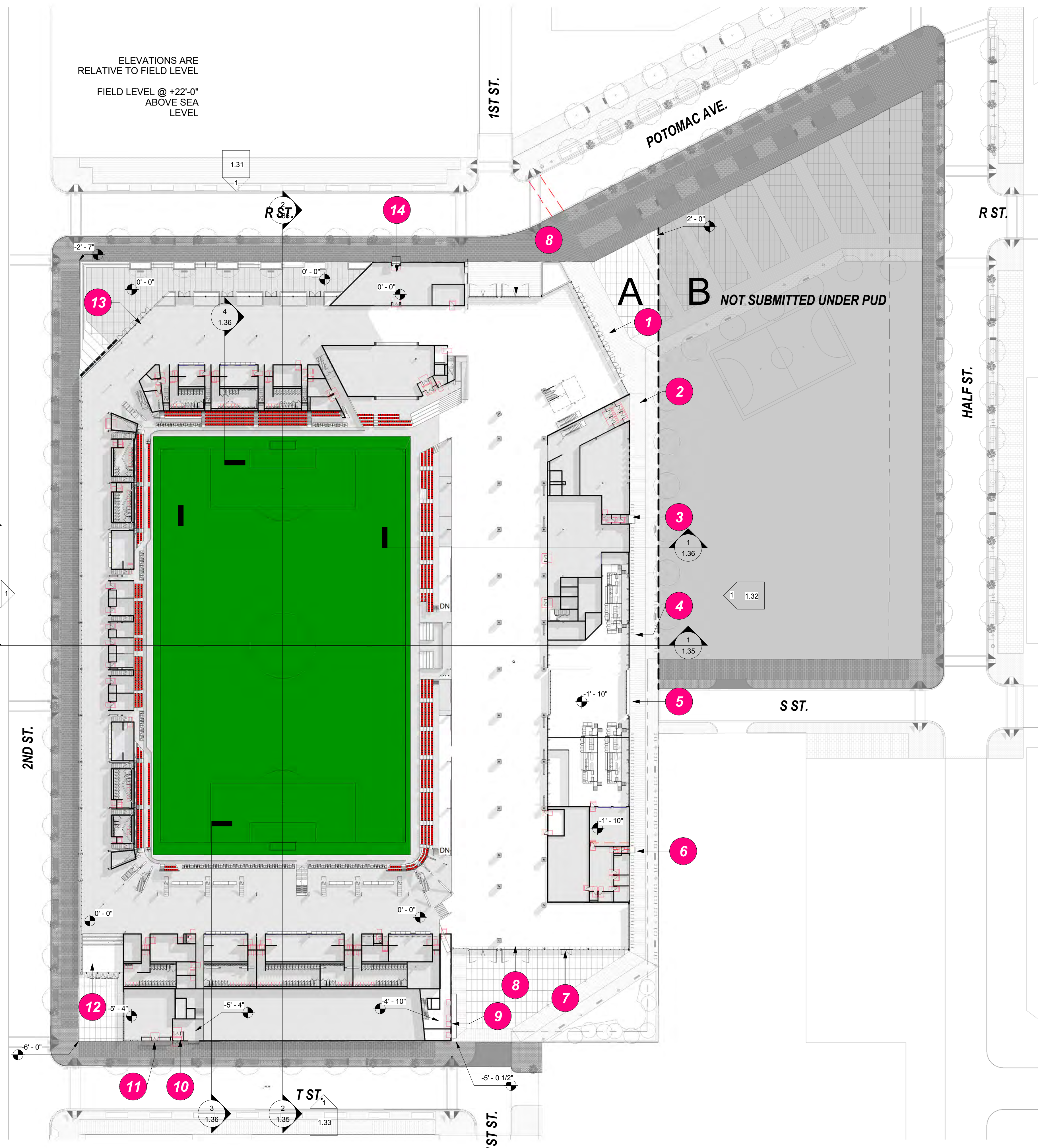
- Northeast Main Fan Entry Gate **1**
- Northeast Premium Entry **2**
- Ticketing + Food Service Staff Entry **3**
- Loading Dock Pedestrian Gate **4**
- Loading Dock Vehicular Gate **5**
- Stadium Operations Staff Entry **6**
- Utility Entry Gate **7**
- PEPCO 2' 24' Easement Entry Gates **8**
- Event Staff + Press + Officials Entry **9**
- DC United Staff + Player + Office Space Entry **10**
- Southwest Corner Retail Entry **11**
- Southwest Corner Fan Entry Gate **12**
- Northwest Corner Fan Entry Gate **13**
- Team Store Entry **14**

**PART B - NOT PART OF STADIUM PUD SUBMISSION, DESIGN INTENT SHOWN FOR REFERENCE ONLY**

**PUBLIC REALM - NOT PART OF PUD SUBMISSION, DESIGN INTENT SHOWN FOR REFERENCE ONLY**

**DISTRICT OF COLUMBIA RESPONSIBLE FOR DESIGN OF PUBLIC REALM**

ELEVATIONS ARE RELATIVE TO FIELD LEVEL  
FIELD LEVEL @ +22'-0" ABOVE SEA LEVEL

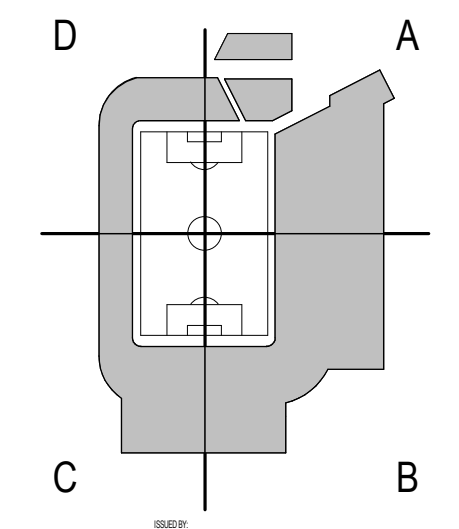


**POPULOUS**  
Marshall Moya Design



DC UNITED SOCCER STADIUM  
100 Potomac Avenue, SW  
Washington, DC 20024

100% PUD SUBMISSION

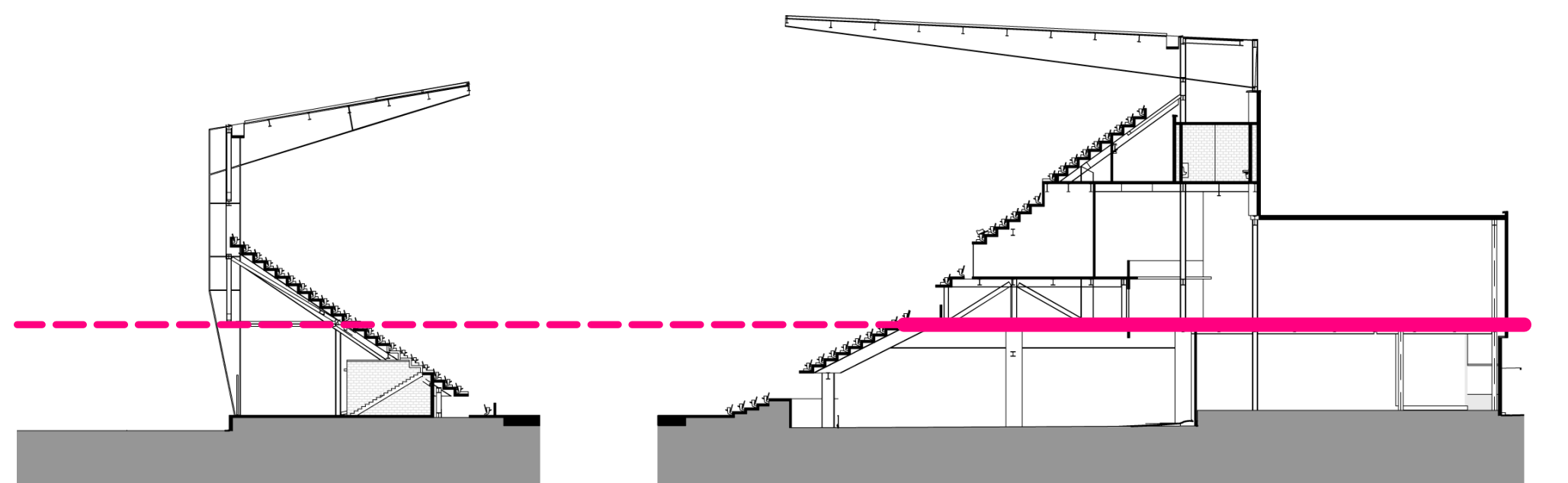
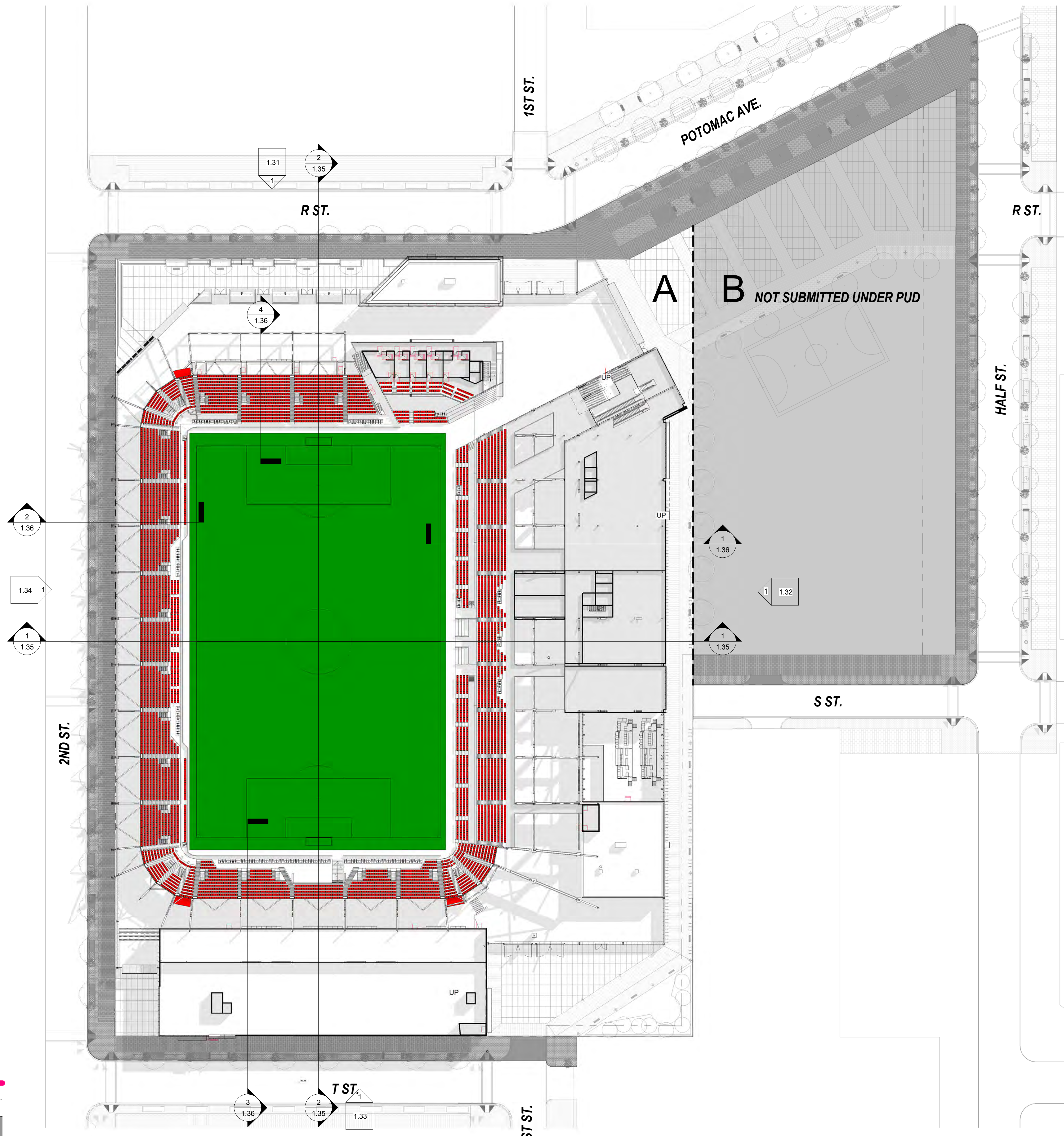


REF PLAN - FIELD LEVEL PLAN

PART B - NOT PART OF STADIUM PUD SUBMISSION, DESIGN INTENT SHOWN FOR REFERENCE ONLY

PUBLIC REALM - NOT PART OF PUD SUBMISSION, DESIGN INTENT SHOWN FOR REFERENCE ONLY

DISTRICT OF COLUMBIA RESPONSIBLE FOR DESIGN OF PUBLIC REALM



WEST SECTION

EAST SECTION

1 CLUB LEVEL PLAN  
1" = 60'-0"

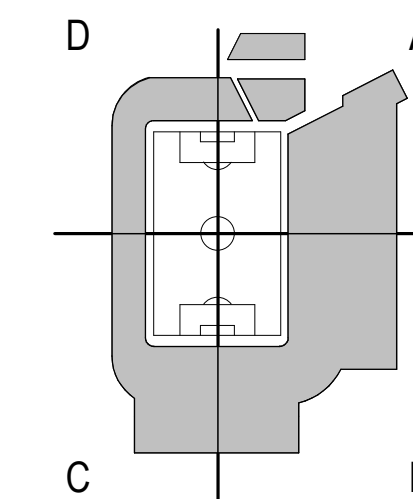
INTERIOR LAYOUTS ARE ILLUSTRATIVE ONLY AND SUBJECT TO CHANGE ON FINAL PLAN

POPULOUS  
Marshall Moya Design



DC UNITED SOCCER STADIUM  
100 Potomac Avenue, SW  
Washington, DC 20024

100% PUD SUBMISSION

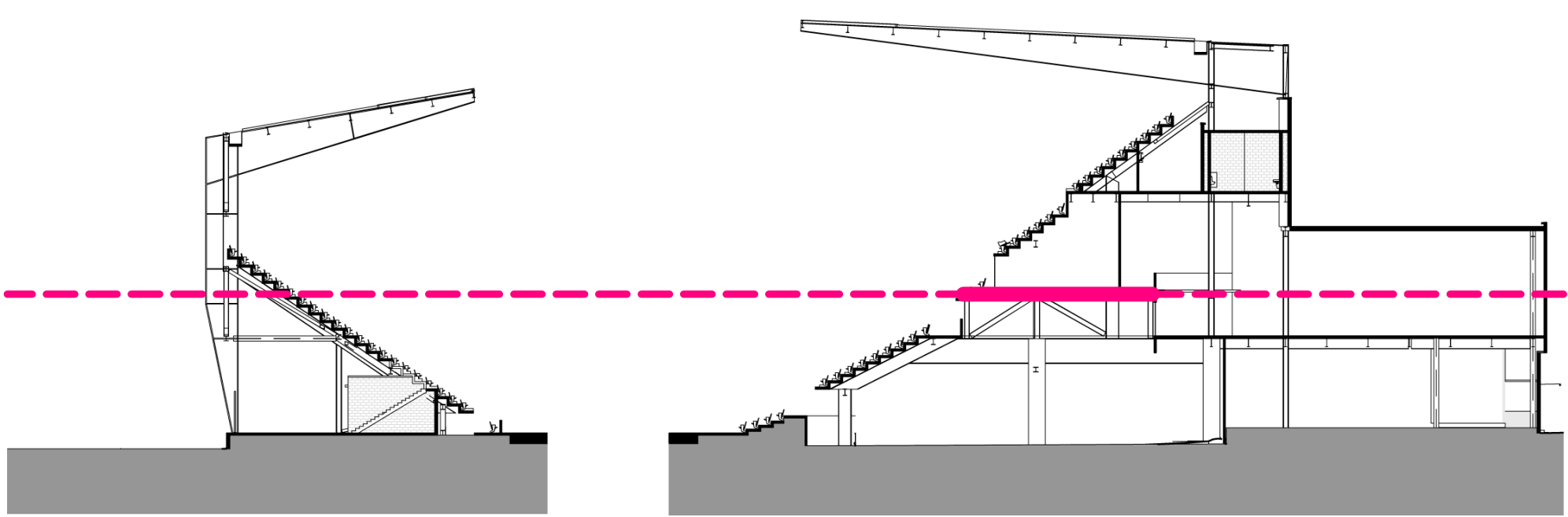
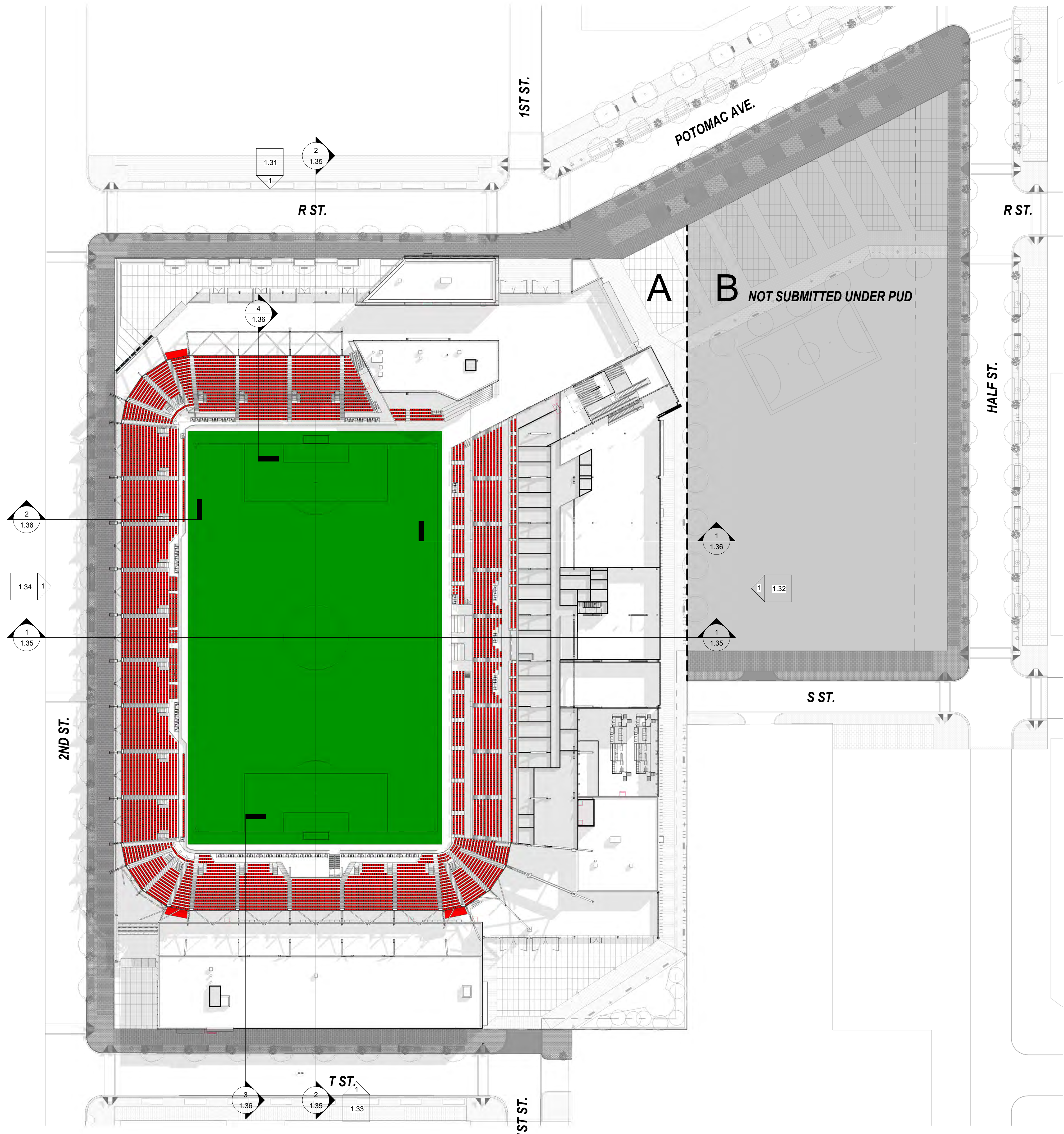


REF PLAN - CLUB LEVEL PLAN

**PART B - NOT PART OF STADIUM  
PUD SUBMISSION, DESIGN INTENT  
SHOWN FOR REFERENCE ONLY**

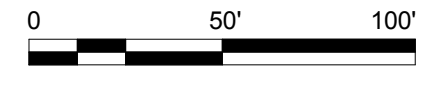
**PUBLIC REALM - NOT PART OF PUD  
SUBMISSION, DESIGN INTENT SHOWN  
FOR REFERENCE ONLY**

**DISTRICT OF COLUMBIA RESPONSIBLE  
FOR DESIGN OF PUBLIC REALM**



**WEST SECTION**

**EAST SECTION**



① SUITE LEVEL PLAN  
1" = 50'-0"

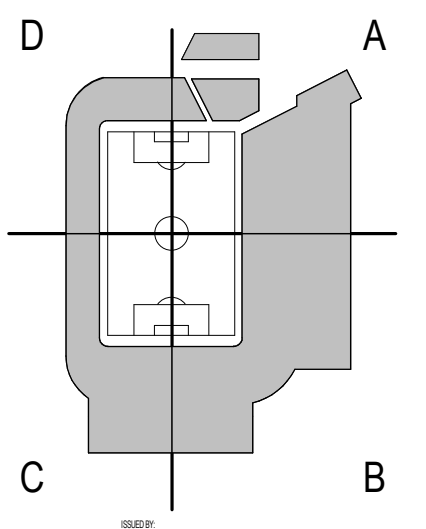
**INTERIOR LAYOUTS ARE ILLUSTRATIVE ONLY AND SUBJECT TO CHANGE ON FINAL PLAN**

**POPULOUS**  
Marshall | Moya Design



**DC UNITED SOCCER STADIUM**  
100 Potomac Avenue, SW  
Washington, DC 20024

100% PUD SUBMISSION



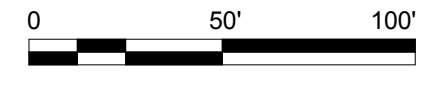
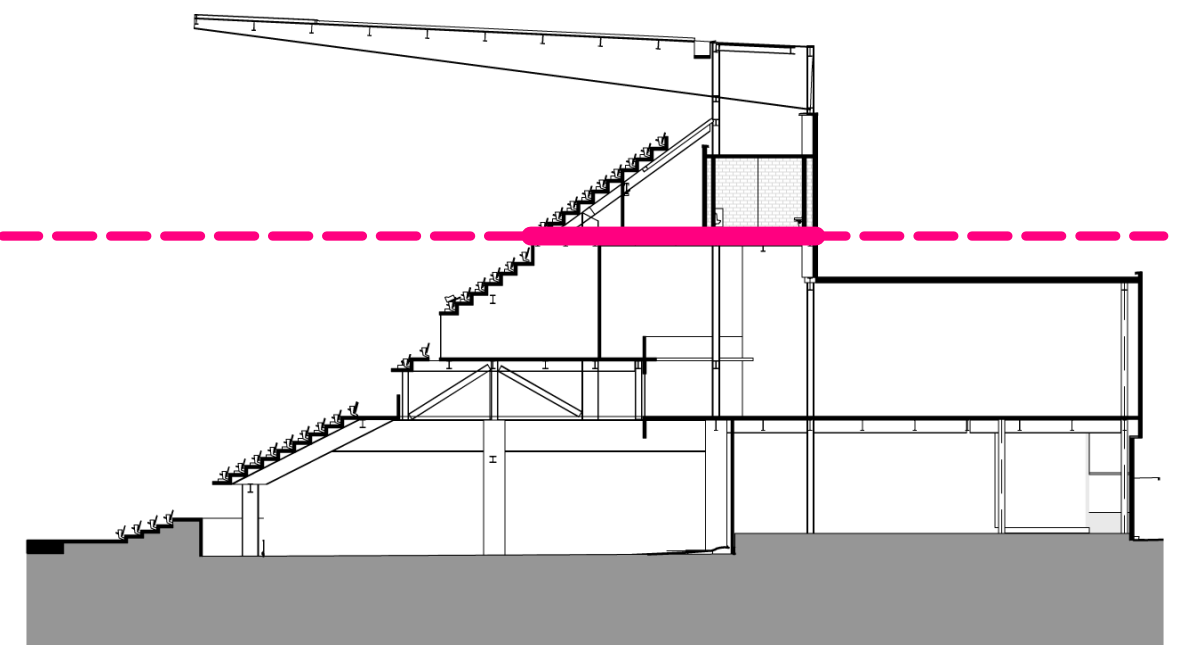
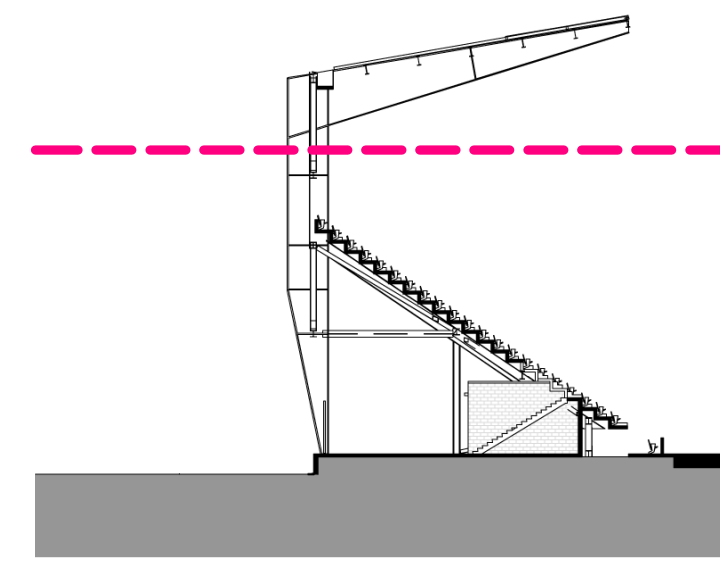
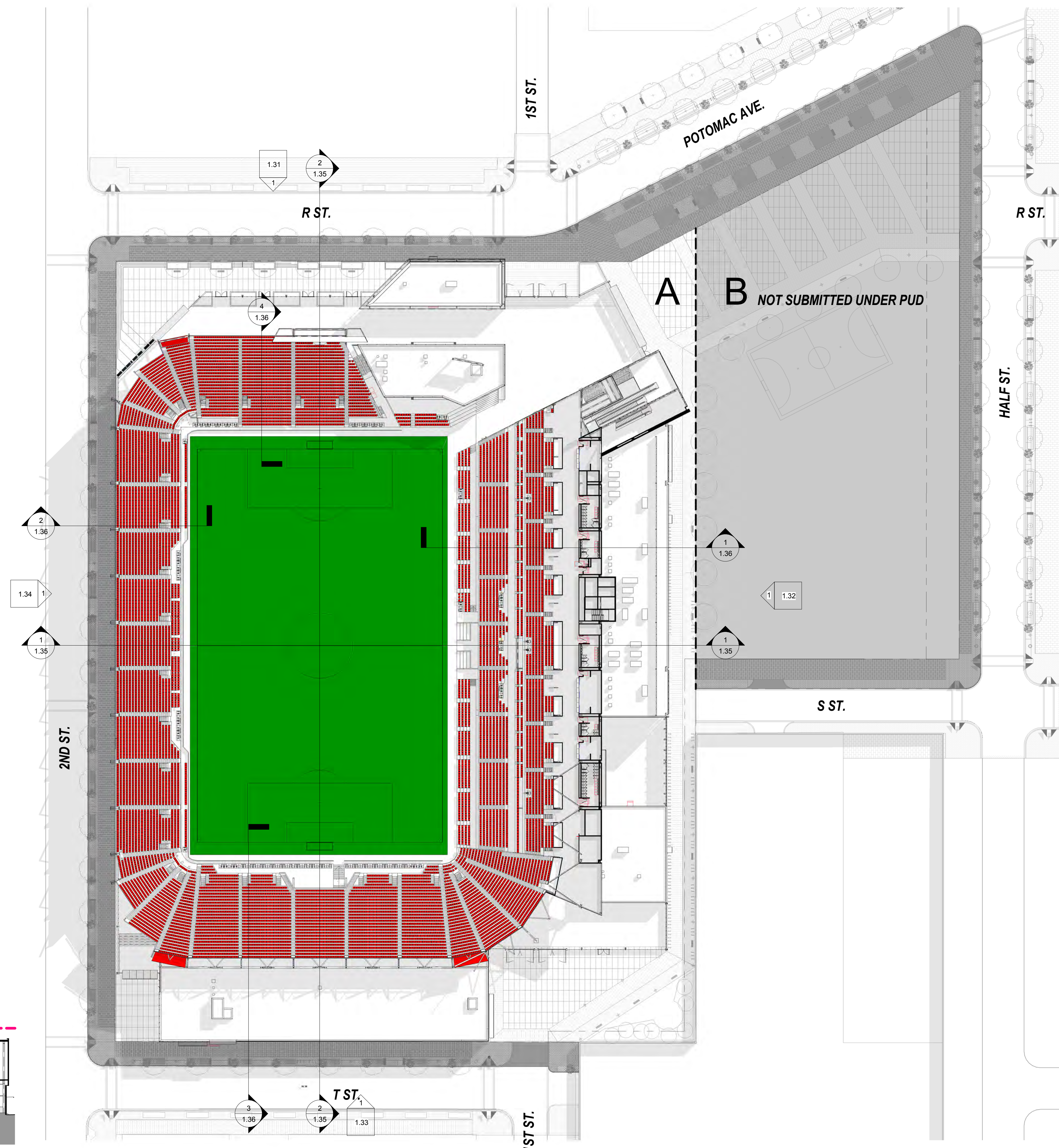
REF PLAN - SUITE LEVEL  
PLAN



PART B - NOT PART OF STADIUM PUD SUBMISSION, DESIGN INTENT SHOWN FOR REFERENCE ONLY

PUBLIC REALM - NOT PART OF PUD SUBMISSION, DESIGN INTENT SHOWN FOR REFERENCE ONLY

DISTRICT OF COLUMBIA RESPONSIBLE FOR DESIGN OF PUBLIC REALM



1 UPPER CONCOURSE PLAN 1" = 50'-0"

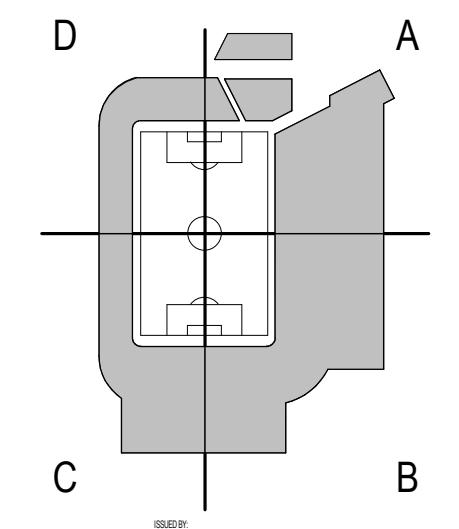
INTERIOR LAYOUTS ARE ILLUSTRATIVE ONLY AND SUBJECT TO CHANGE ON FINAL PLAN

POPULOUS Marshall Moya Design



DC UNITED SOCCER STADIUM 100 Potomac Avenue, SW Washington, DC 20024

100% PUD SUBMISSION



REF PLAN - UPPER CONCOURSE LEVEL PLAN

